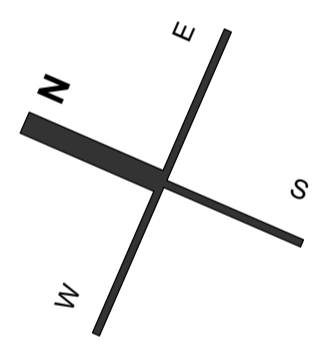
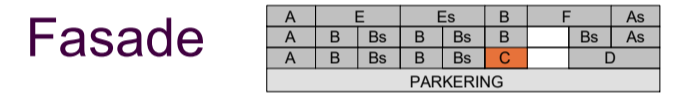
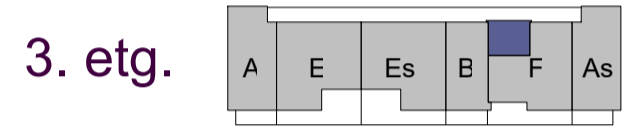
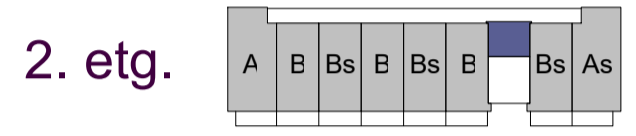
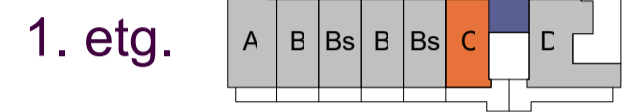
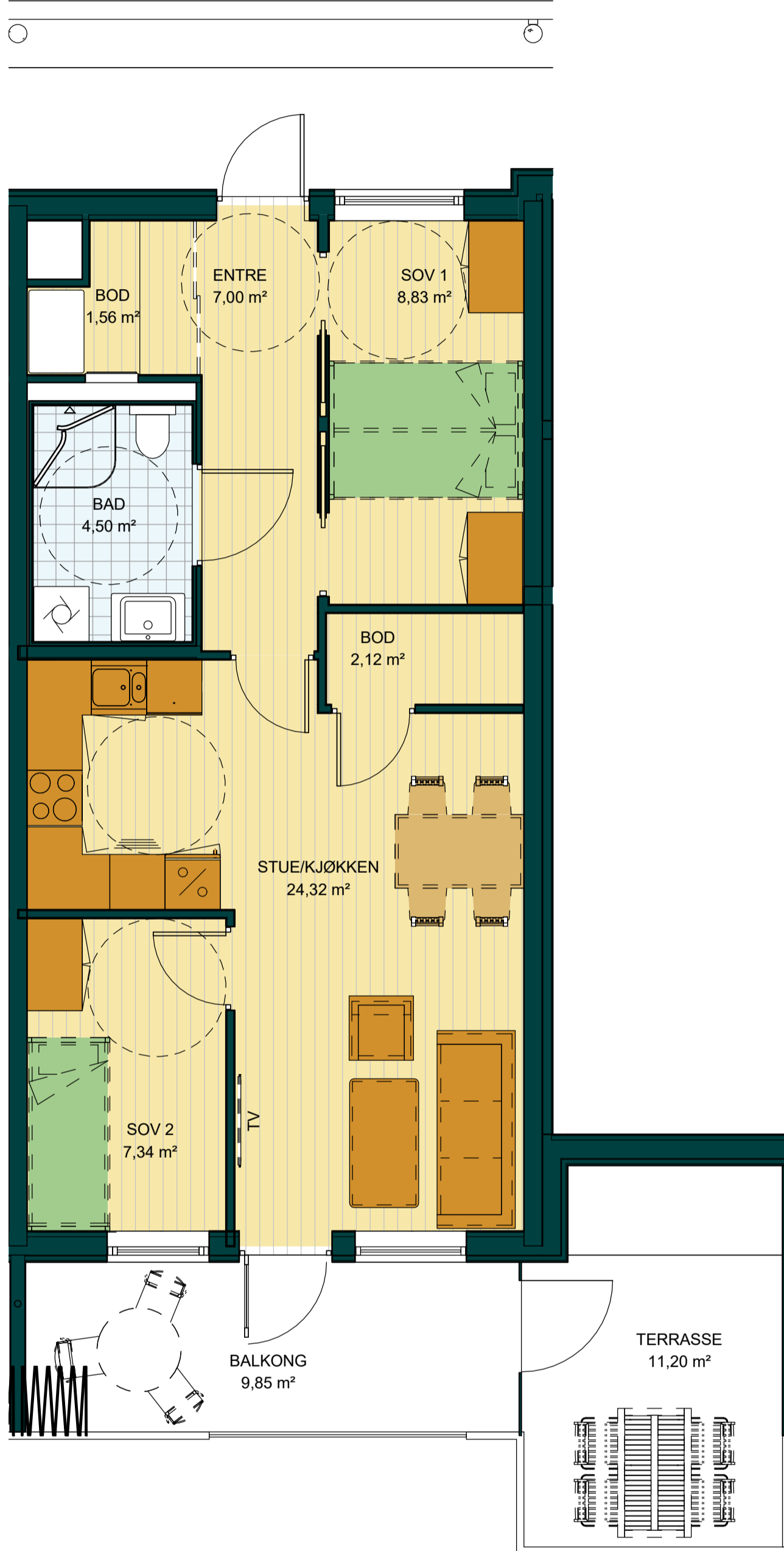
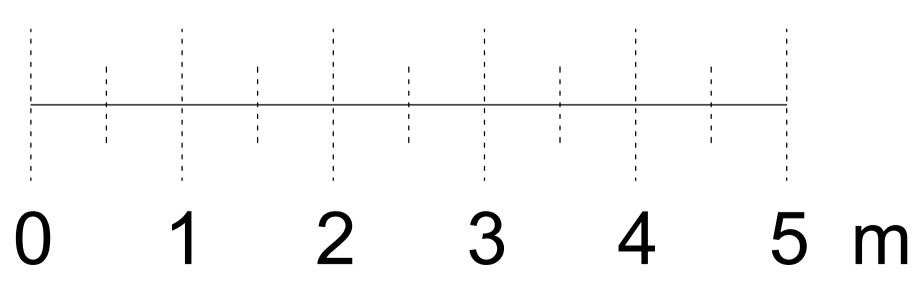


**L C** BRA 59,26 m<sup>2</sup>  
P-rom 54,46 m<sup>2</sup>  
Innglasset balkong 9,85 m<sup>2</sup>  
Terrasse 11,20 m<sup>2</sup>

L. type C  
L5102 H0102 1. etasje



**MÅLESTOKK**



| Rev. | Dato | Beskrivelse | Tegn. | Kontr. |
|------|------|-------------|-------|--------|
|------|------|-------------|-------|--------|




Salgstegninger

Gnr./Bnr. 123/3 Tiltakshaver JM Norge AS  
Prosjektnavn Lyderhornslie Sør H5

Tegningsnavn Salgstegning Leilighet C

| Målestokk       | Org.form. | Prosj.nr. | Dato     | Tegnet av | Kontr. |
|-----------------|-----------|-----------|----------|-----------|--------|
| indicated       | A2        | 13006     | 22.09.17 | MK        | JK     |
| 13006-H5-Modell |           |           |          |           |        |

A 21 H5 C SA